

NOTES

A POST-MEDIEVAL SLIPWARE BOWL FROM CUDDINGTON, BUCKINGHAMSHIRE

With the publication of a group of slip decorated pottery from Brill (Cocroft, pp. 72–93 above), it seems opportune to draw attention to an almost complete slip decorated bowl from Cuddington in the collection of the County Museum, Acc. No. 32.77.

The bowl was presented to the Museum in 1977 by Mrs J. C. Murray of Cuddington following discovery in a paddock in the village. The bowl was broken when found and has subsequently been restored.

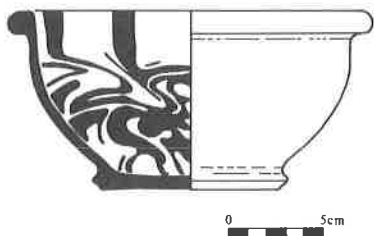


Fig. 1. Bowl from Cuddington (1:4).

It is hemispherical with a pronounced footring and has an evenly oxidized brick-red fabric. The interior has a clear glaze, which gives a light brown colour to the body of the vessel. The slip decoration is predominantly yellow in colour, although some is green, presumably caused by the presence of copper. Some evidence of wear to the glaze at the base of the bowl was visible.

The bowl is probably of eighteenth-century date. Its fabric compares well with that of Brill products and the 'marbled' slip trail pattern as noted above is a common feature of that industry.

I am grateful to Linda Babb, Keeper of History, Buckinghamshire County Museum, for bringing this vessel to my notice.

W. D. Cocroft

THE AMERSHAM FINGER-RINGS

Through an unfortunate oversight, two of the late Roman rings illustrated in *Records* Vol. 26 (1984), p. 130, Fig. 1 were shown upside down. The figure opposite repeats Pat Jacobs's drawing of rings 1–5 but with the intaglio faces of rings 1 and 3 now the right way up.

Even more unhappy was the loss of the

drawing of ring 6, in many ways the most distinctive of the group and the one paralleled at Moor Park, Herts. I am very grateful to Mr Julian Munby FSA for providing the replacement drawing shown on the facing page.

M. Henig

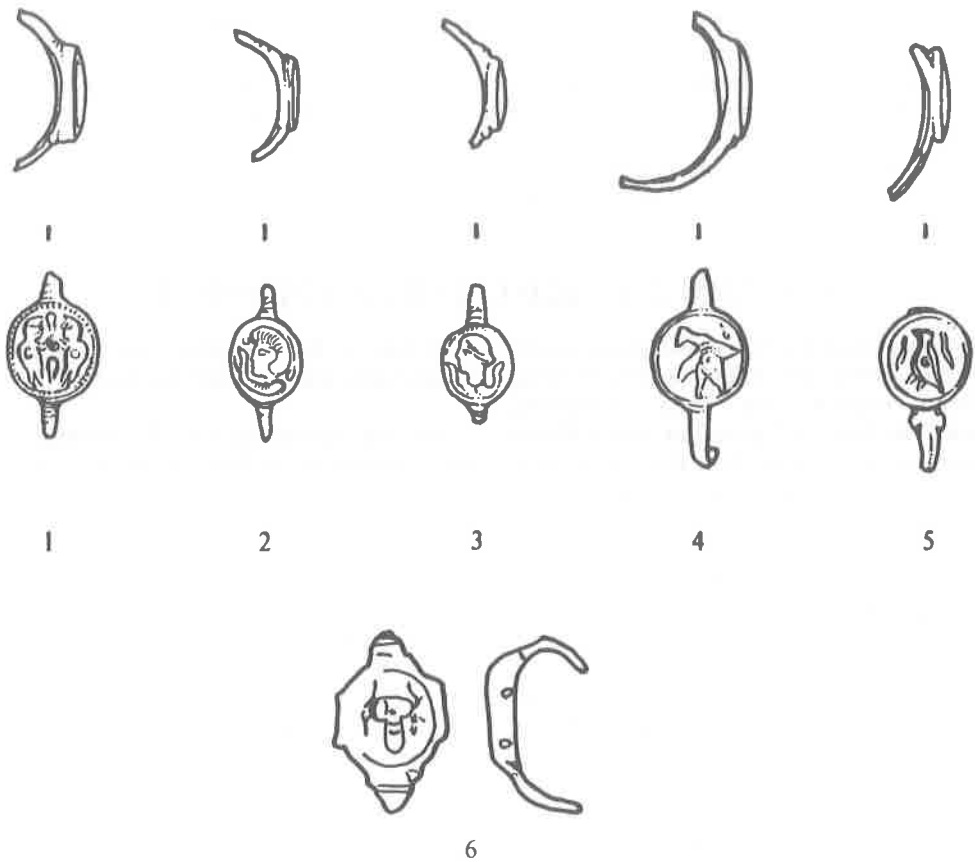


Fig. 1. The Amersham finger-rings.