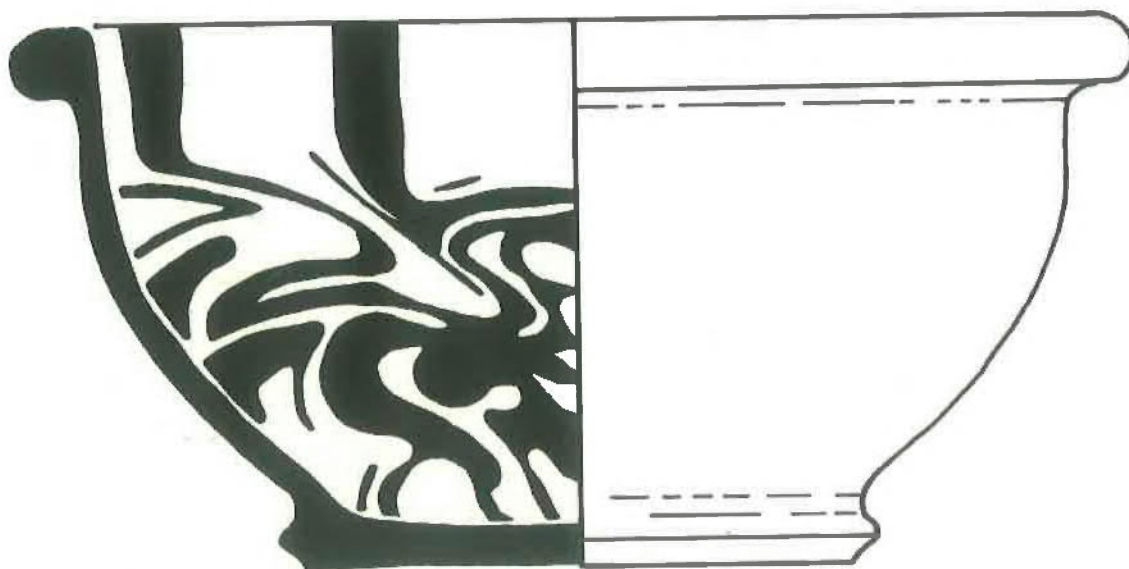


RECORDS OF BUCKINGHAMSHIRE

Volume 27 1985



A post-medieval slip-ware bowl, made at Brill and found, almost complete, at Cuddington.

RECORDS OF BUCKINGHAMSHIRE

**BEING THE JOURNAL
OF THE ARCHITECTURAL AND
ARCHAEOLOGICAL SOCIETY FOR THE
COUNTY OF BUCKINGHAM**

Edited by
JOHN CHENEVIX TRENCH
Associate Editor
M. E. FARLEY F.S.A.

**VOLUME 27
1985**

**BUCKS ARCHAEOLOGICAL SOCIETY
CHURCH STREET, AYLESBURY**

ISBN 0 949003 02 6

CONTENTS

The Verneys and the Sequestrators in the Civil Wars 1642–56 <i>J. P. F. Broad</i>	1
A Neolithic Settlement at Stacey Bushes, Milton Keynes <i>H. Stephen Green and Stephanie Sofranoff</i>	10
Hardmead and its Deserted Village <i>Paul S. H. Smith</i>	38
The Development of the Borough of Buckingham, 914–1086 <i>A. H. J. Baines</i>	53
The Buckinghamshire Saints Reconsidered 1: St Firmin of North Crawley <i>R. P. Hagerty</i>	65
Two Post-Medieval Pottery Kilns and Associated Products from Prosser's Yard, Brill Buckinghamshire <i>W. D. Cocroft</i>	72
The Manor and Abbey of Burnham <i>Sister Jane Mary SPB and D. D. & D. M. Miller</i>	94
The Wall-Painting of the Unknown Saint at St Mary's Church, Padbury <i>John Edwards</i>	101
Excavations near Mount Wood, Chenies <i>Rosalind Dunnet</i>	107
A Report on Excavations at Bury Farm, Amersham <i>Chess Valley Archaeological and Historical Society</i>	119
Archaeological Notes from Buckinghamshire County Museum	129
Notes	
A Post-Medieval Slipware Bowl from Cuddington, Buckinghamshire	134
The Amersham Finger-Rings	134
The Museum	135
County Record Office	136
Reviews	137
Obituary	141
The Society	142
Natural History Section	144
Officers of the Society	146

CORRECTION

THE WHITELOCK MONUMENT IN FAWLEY CHURCH by Lorna M. Head (*Records* Vol. 26)

Through a regrettable confusion, the captions to the plates illustrating this article were incorrect. The Editor tenders his apologies to the author and the providers of the illustrations. They should have read as follows:

Plate VIII. The monument to Sir James and Lady Whitelock in Fawley church (photo: Mary Farnell).

Plate IX. Fawley church from the south-west by J. Buckler, 1805, showing the chapel before restoration. Bodleian Library MS Top. Bucks a.1, fol. 32. (Reproduced by kind permission of the Bodleian Library, Oxford.)