

# AN ANNOTATED LIST OF SPECIES OF THE GENUS *STENUS* (COLEOPTERA: STAPHYLINIDAE) IN BUCKINGHAMSHIRE INCLUDING TWO NEW TO THE COUNTY

C. REID

Staphylinidae are generally more obscure and less well known than the Carabidae listed elsewhere in this volume. Nevertheless the genus *Stenus* represents a large homogeneous group of species which are neither too small nor too rapid in movement to escape the observer, and they often occur in great abundance. Thus the group is fairly well represented in most collections and the 46 species recorded here are a good proportion of the 72 on the British list. The only published account of this group is that of Fowler (1902) which was largely contributed by E.G. Elliman, a staphylinid specialist. There are very occasional references to the genus in the '*Entomologist's Monthly Magazine*' and I have recently added 6 species to the county list (Reid, 1979). I hope to publish a more detailed assessment of the genus in the near future.

Nomenclature follows Pope (1977), wherein subgenera are ignored and the species listed alphabetically.

### Key to Symbols

- \* New to County
- † No locality details available, or confirmation of species desirable.
- F Fowler (1902).
- E Published short notes by E. G. Elliman (1898 - 1903) and R. J. Spittle (1949).
- T Rev. C. E. Tottenham coll. and notebooks, British Museum (Natural History) (1931 - 1956).
- Q H. J. Quilter coll., Buckinghamshire County Museum (c. 1918 - 1948).
- A Sir E. C. Anson coll., Buckinghamshire County Museum (c. 1955 - 1975).
- P P. M. Hammond coll. and notebooks, London (c. 1955 - ).
- R C. A. M. Reid coll. and notebooks (1976 - ).
- S N. Stott coll., Bletchley (1979 - ).

Stenus Latreille		canescens Rosenhauer	R
aceris Stephens	FPR	carbonarius Gyllenhal	F
asphaltinus Erichson	F	cicindeloides (Schaller)	FR
† ater Mannerheim	F	circularis Gravenhorst	FE
bifoveolatus Gyllenhal	FR	clavicornis (Scopoli)	FQARS
† biguttatus (Linnaeus)	F	* comma Leconte	R
bimaculatus Gyllenhal	FPR	crassus Stephens	ER
binotatus Ljungh	FR	flavipes Stephens	FTPRS
boops Ljungh	FTPR	fornicatus Stephens	P
brunnipes Stephens	FTR	fulvicornis Stephens	FTARS
butrintensis Smetana	R	fuscicornis Erichson	FEA
canaliculatus Gyllenhal	FERS	fuscipes Erichson	FR

guttula Müller  
 impressus Germar  
 \*incrassatus Erichson  
 juno (Paykull)  
 latifrons Erichson  
 lustrator Erichson  
 melanopus (Marsham)  
 †nanus Stephens  
 †nigritulus Gyllenhal  
 nitidiusculus Stephens  
 ochropus Kiesenwetter  
 ossium Stephens  
 pallipes Gravenhorst  
 pallitarsis Stephens  
 picipennis Erichson  
 picipes Stephens  
 pubescens Stephens  
 pusillus Stephens  
 rogeri Kraatz  
 similis (Herbst)  
 solutus Erichson  
 subaeneus Erichson  
 tarsalis Ljungh

FS  
 FQPR  
 R  
 FEAPRS  
 FER  
 R  
 R  
 FA  
 F  
 FPR  
 FR  
 FQPRS  
 FPR  
 R  
 R  
 FQRS  
 FR  
 FR  
 FPR  
 FR  
 FQR  
 FER  
 FPR

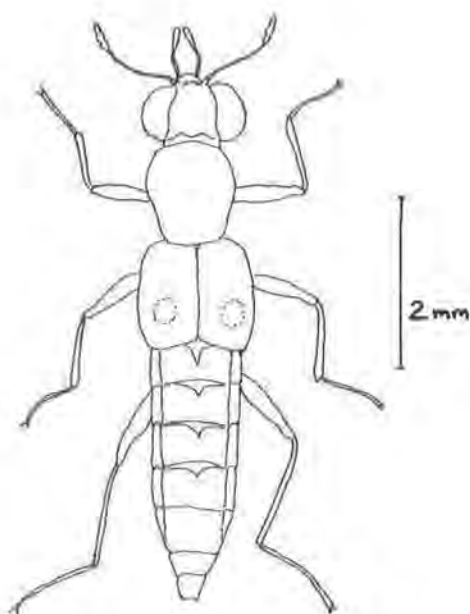


Fig. 1. *Stenus bimaculatus* Gyllenhal

#### Acknowledgements

Mr. P. Hammond (British Museum, Natural History) has very kindly helped with determinations and extraction of information from the national collection and his own observations. I thank Miss J. Royston for access to the Buckinghamshire County Museum collections and Mr. N. Stott for making his collection available for study. This work has been made possible with the aid of a research grant from the Buckinghamshire Archaeological Society.

#### REFERENCES

- Fowler, W.W., 1902. *Natural History: Insects V.C.H. Bucks.* I, 71 - 3.  
 Pope, R.D., 1977. *Handbooks for the identification of British insects* 11, part 3. Royal Entomological Society of London.  
 Reid, C.A.M., 1979. 'Some notes on the genus *Stenus* (Coleoptera, Staphylinidae) in Buckinghamshire.' *Entomologists mon. mag.* 115: 104.

C.A.M. Reid,  
 46 School Lane,  
 Weston Turville.  
 24th July, 1980.

*For another article on a similar subject see page 76.*