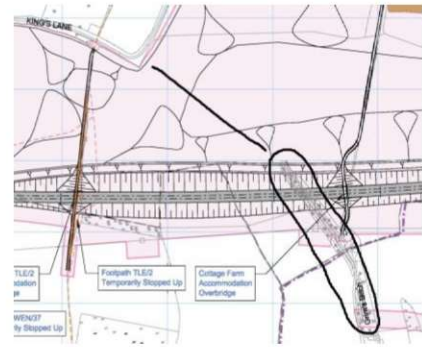
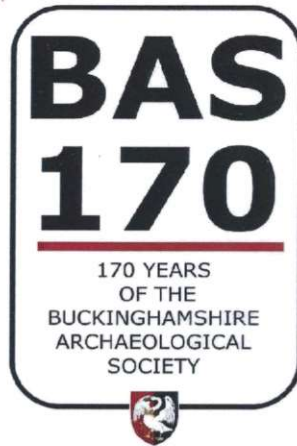




Trace of HS2 through Bucks



HS2 plan showing line crossing Grims ditch

UNCOVERING THE BURIED PAST BENEATH THE HS2 RAILWAY LINE THE BUCKINGHAMSHIRE LOCAL HISTORY NETWORK

Saturday 29 September 2018

Prehistoric boundaries,
a Roman town, a deserted medieval village, a ruined church and an
ancient burial ground...

This will be a full day of first-hand accounts from the archaeologists
carrying out excavations ahead of the construction of the HS2 high-
speed rail line across Buckinghamshire.

**At The Oculus, Aylesbury Vale District Council, Gatehouse
Road, Aylesbury**

Tickets £15 without lunch (full-time students under 25 free), £20 with
buffet lunch,

by post from BAS, County Museum, Church Street, Aylesbury HP20
2QP

(please make cheques payable to 'Bucks Archaeological Society').

A BUCKS LOCAL HISTORY NETWORK DAY

with displays by local societies